

### Site Address

Survey No. 90, Gate No. 3, Veerbhadra Nagar,  
Service Road, Mumbai - Bangalore Highway, Baner, Pune.

### Credits

#### Architects

Fourth Dimension Architects Pvt. Ltd.

#### RCC Consultants

Hansal Parikh & Associates

[sales@aurus-baner.com](mailto:sales@aurus-baner.com)

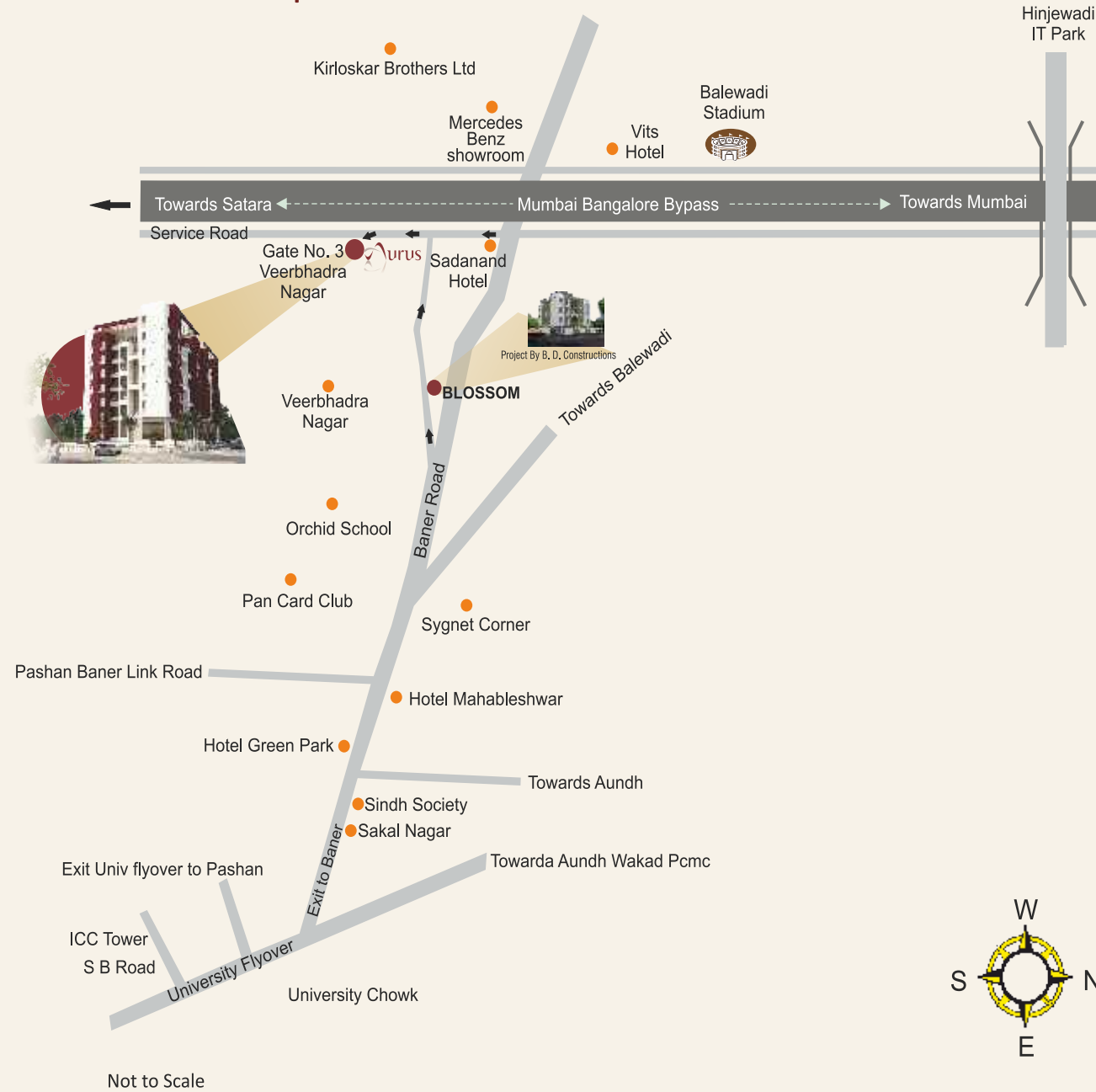
[www.aurus-baner.com](http://www.aurus-baner.com)



### B.D. Constructions Pvt. Ltd.

502 - B, Poonam Chambers, A - Wing, Shivsagar Estate,  
Dr. Annie Besant Road, Worli, Mumbai 400 018

### Location Map



A Project by **B. D. Constructions**

# Aurus

SHEER DISTINCTION

**B. D. Constructions Pvt. Ltd.** is an eminent developer, engaged in the construction of residential apartments and commercial properties.

Aurus is a distinctive residential-cum-commercial project of 31 two-bedroom apartments and 14 road facing shops located in Baner on the Mumbai-Bangalore highway service road at Veerbhadra Nagar, one of Pune's fastest growing areas.

A promising location that combines the charm of the present with the promise of the future - of growth, development and high appreciation in real estate values.

Aurus boasts close proximity to all conveniences of daily life with shopping, medical facilities, schools, etc. all in the vicinity. A big advantage is that Aurus is in the very heart of Pune's burgeoning IT district.

Aurus is brought to you by an experienced team of professionals committed to building quality, brick by brick. We understand your needs and have made serious efforts to fulfil them.

Welcome to Aurus.



## Specifications

### RCC Structure

- Earthquake Resistant

### Kitchen

- Granite Kitchen Platform With S.S. Sink
- Designer Wall Tiles Above Cooking Platform Upto Lintel Level
- Electrical & Plumbing Provision For Water Purifier

### Flooring

- Vitrified Flooring In All Rooms
- Anti-skid Flooring For Terrace And Toilet

### Doors & Windows

- Laminated / Molded Main Entrance Door
- Waterproof Flush Doors In Every Room With Elegant Handle & Lock Set
- Powder Coated Aluminum Sliding Windows With Mosquito Net
- MS Safety Grill For All Windows
- Granite / Marble Door Frame For Toilets
- Wooden Door Frame For Main Door & Bedrooms

### Toilets

- Branded Sanitaryware
- Concealed Plumbing
- Branded CP Fittings
- Designer Wall Tiles Upto Lintel Level
- Electrical & Plumbing Provision For Water Heater & Exhaust Fan

### Electrical

- Concealed Copper Wiring
- Branded Modular Switches
- Telephone & TV Points In Living & Master Bedroom
- AC Points In Living & Master Bedroom

### Painting

- Internal Walls In Oil Bound Distemper
- External Walls In Acrylic Paint

## Amenities

- Decorative Compound Wall
- D. G. Backup For Lifts And Common Areas
- Signature Entrance Gate With Security Cabin
- Landscaped Garden
- Play Area For Children
- Adequate Parking
- Well Laid Out Internal Roads
- Rain Water Harvesting
- PMC Water Supply and Drainage



Note: Images are for representation purpose only.



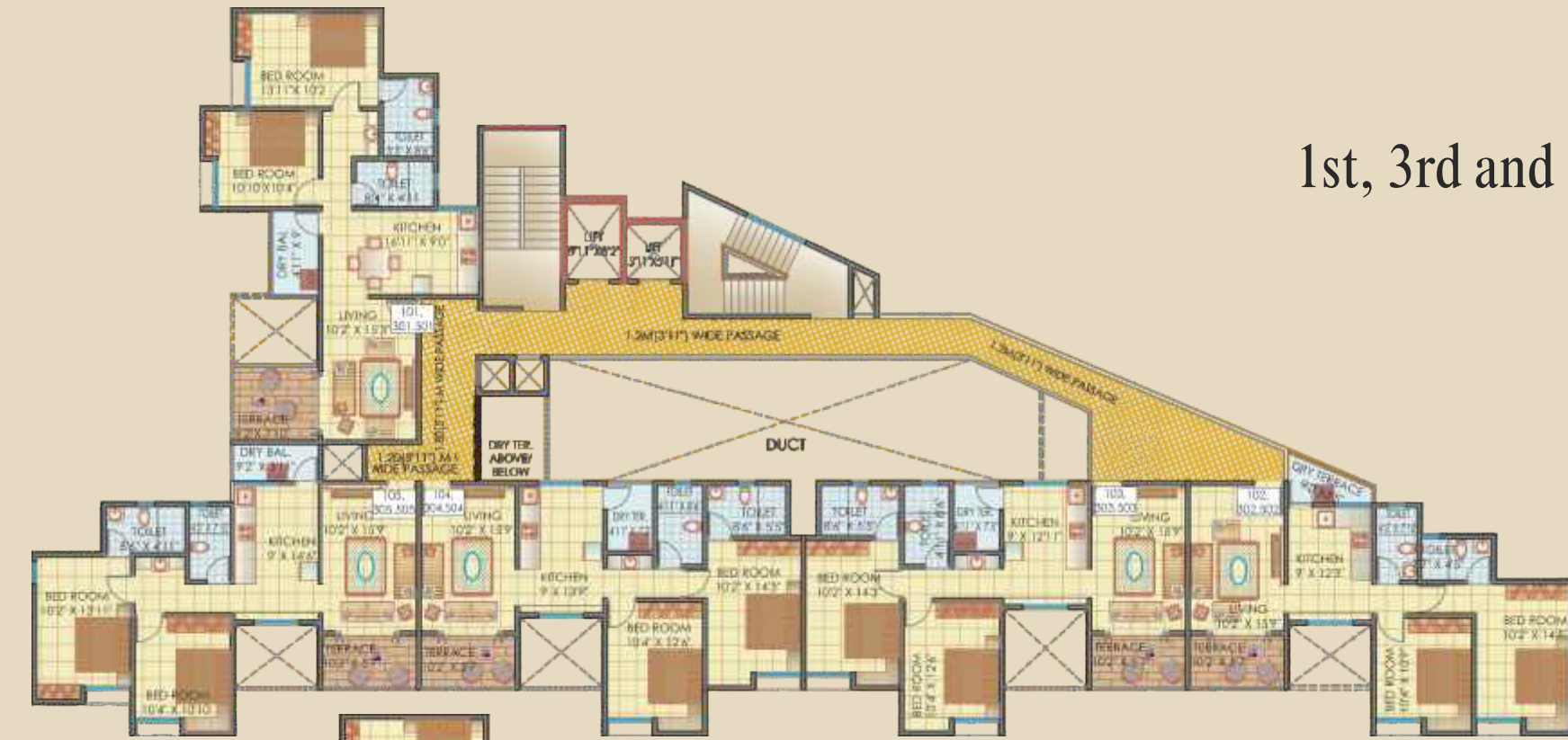
**Aurus**  
SHEER DISTINCTION

Side View

3D Cut Section View



1st, 3rd and 5th Floors



Upper Ground Floor



2nd, 4th and 6th Floors

